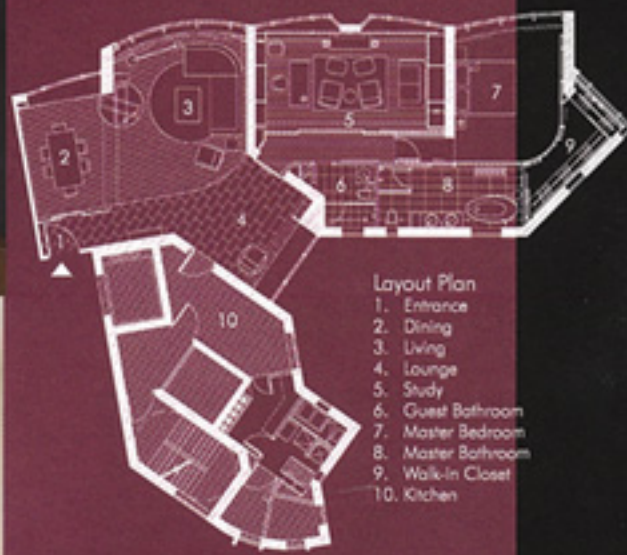




Images courtesy of Asiacity Architects



What?
House of Embrace

Where?
Mid-levels, Hong Kong

Who?
Asiacity's Alexander Wong

Why?
Because all this 2,600sq-ft luxury apartment lacked was spatial order and a sense of flow and movement.

How?
Through a series of curved and straight planes with implied delineations that both synchronise with and echo the existing volumes of the apartment. Besides being in contrast with the existing orthogonal feature walls, these curvilinear planes also act as a succession of surfaces that 'embrace' the spaces within. Opposite the largely purple living and dining areas and the dark timbered study, the master bedroom and bathroom are enveloped by a palette of soft beiges, separating the public spaces from the private.

