

# TRENDS



hong kong interiors

## Design that embraces

"Living inside this luxurious apartment is almost like being held by a series of strong protecting arms."

Alexander Wong, director of Asiacity Architects



## Sculptural identity

This luxury apartment at Henderson Land's Régence Royale was designed by Alexander Wong's Asiacity Architects. It features a curvilinear design that effectively wraps the space to provide a private haven in the clouds

Most luxurious high-rise apartments have an obvious focus - the view beyond the windows. But this doesn't have to mean the interior is compromised. As this project shows, the right design will provide the best of both worlds.

Alexander Wong, director of Asiacity Architects, says the interior of the prestigious 240m<sup>2</sup> Hong Kong Mid-level apartment needed to maximise unobstructed views of Victoria Harbour. But it also had to establish a spatial order and provide a sense of flow.



Preceding pages and above left: A subtle colour palette enhances the sophistication of this Hong Kong apartment interior designed by Alexander Wong. Curved, grey-tinted glass curtains at the apartment entrance shield the living area and provide a greater degree of mystery and privacy.

Top: Curved forms visually soften the orthogonal walls and help define the circulation areas. The television sits on a curved, timber swivel stand - its shape is echoed by the ceiling bulkhead.

Above and left: Vintage designer furniture and European accessories enhance the aesthetics.



## TRENDS



Top and above: Wood blinds transform the study by night. A line of shelving above the windows and wood panelling features uplights that impart a soft glow. The room was designed with flexibility in mind – it could be divided into two rooms in the future if required.

Above right: Giant glass sliding partitions and large windows enhance the study's spacious look.

Legend for plan: 1 entrance, 2 dining, 3 living, 4 lounge, 5 study, 6 guest bathroom, 7 master bedroom, 8 master bathroom, 9 walk-in closet, 10 kitchen.



"A series of curved and straight planes were designed to offset the existing orthogonal feature walls," Wong says. "These new curvilinear planes create a succession of surfaces that actively embrace the spaces within. Living inside this lavish apartment is almost like being held by a series of strong, protecting arms."

The design provides three giant curved grey-tinted glass curtains at the entrance lobby, which hint at the space beyond.

"The glass curtains not only work as functional screens that redirect the eye and

circulation towards the living room," says Wong. "They also provide an interesting contrast to the soft white cotton curtains at the windows and juxtapose the rectilinear lines of the lounge suite."

The open-plan living and dining area is a Y-shaped volume that is anchored by a cylindrical drum unit that forms a multi-functional television and music console.

"The drum is a modern version of the fireplace in a traditional home, with the hearth replaced by a giant high-definition television on a swivel base," says Wong.

The circulation path implied by the dropped ceiling leads to a spacious study and guest room. Wong says this has been designed as a modernised version of a smoking room in a gentleman's club.

Timber bookshelves line three sides of the study, with the other side divided at intervals by a series of glass sliding doors.

In the master bedroom, the view again is the focus. A sense of intimacy is created by the curved windows and curvilinear wall that wraps around the room, concealing the luxurious walk-in closets behind.

"This room is enveloped by a soft palette of beige and the light brown tones of the wood panelling, carpet and silk curtains," says the architect.

Wong says this room also sets up a visual dialogue between the bedroom and bathroom. In place of the usual solid wall, there is a glass partition, which allows a view of the bathroom centrepiece – a giant freestanding egg-shaped Jacuzzi.

Alexander Wong, who graduated from Princeton University, established Asiaticity Architects in Hong Kong in 2001. The

view article online at [Trendsideas.com/go/23694](http://Trendsideas.com/go/23694)

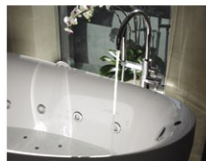
view article online at [Trendsideas.com/go/23694](http://Trendsideas.com/go/23694)



Above, above right and far right: A freestanding egg-shaped Jacuzzi is the centrepiece of the master bathroom. Glass walls create a strong visual connection between the bathroom and bedroom and ensure the owners can enjoy the view while bathing.

Right: This guest bathroom continues the sophisticated, modern theme.

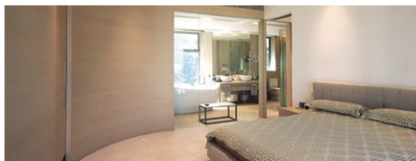
Facing page, lower: Curved walls conceal closets and enclose the master bedroom, providing a sense of intimacy and comfort. The soft neutral colour palette is also a tranquil influence.



company has since become an award-winning, multidisciplinary architectural firm that specialises in avant-garde architecture and luxurious interiors, while also undertaking prestigious real estate projects.

Contact Asiaticity Architects, Suite A, 28/F, EGL Tower, 53 Hung To Rd, Kwun Tong, Kowloon, Hong Kong. Tel: (+852) 2526 3016. Email: [info@asiaticity.com.hk](mailto:info@asiaticity.com.hk). Website: [www.asiaticity.com.hk](http://www.asiaticity.com.hk).

Save or share this story online at [Trendsideas.com/go/23694](http://Trendsideas.com/go/23694)



view article online at [Trendsideas.com/go/23694](http://Trendsideas.com/go/23694)